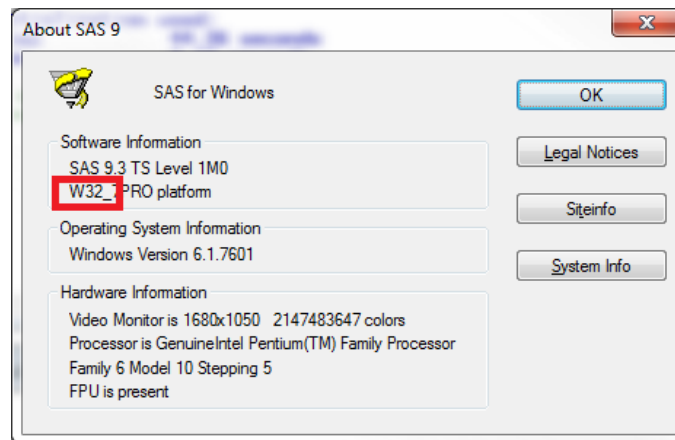


PROC QLEARN Download and Installation Instructions

1. Identify whether you have 32-bit SAS or 64-bit SAS

Note: a 64-bit computer can run 32-bit SAS

- Open SAS version 9.x (Note: SAS Enterprise Guide is NOT SAS)
- Click on the **HELP -> ABOUT SAS 9** menu option
- "64" (in the area shown below) indicates 64-bit SAS
"32," "XP_PRO," and all other notations indicate 32-bit SAS



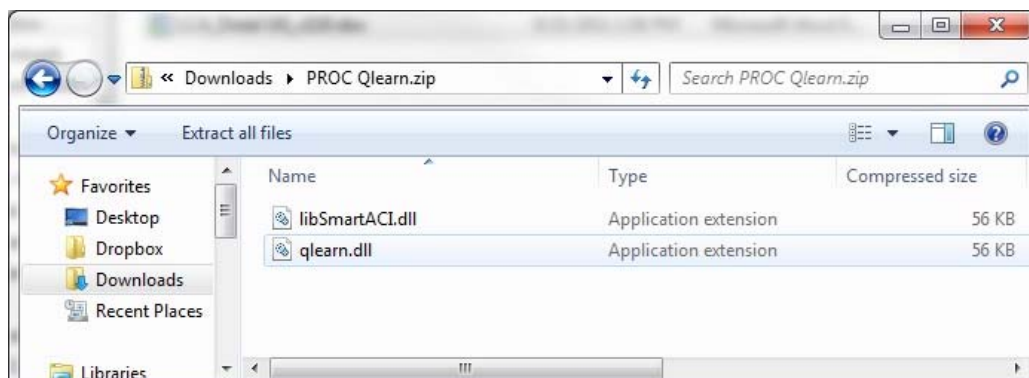
- Close SAS

2. Download proper version of PROC QLEARN

- Navigate to: <http://methodology.psu.edu/downloads/procqlearn>
- Sign in or register
- Download 32-bit or 64-bit PROC with users' guide

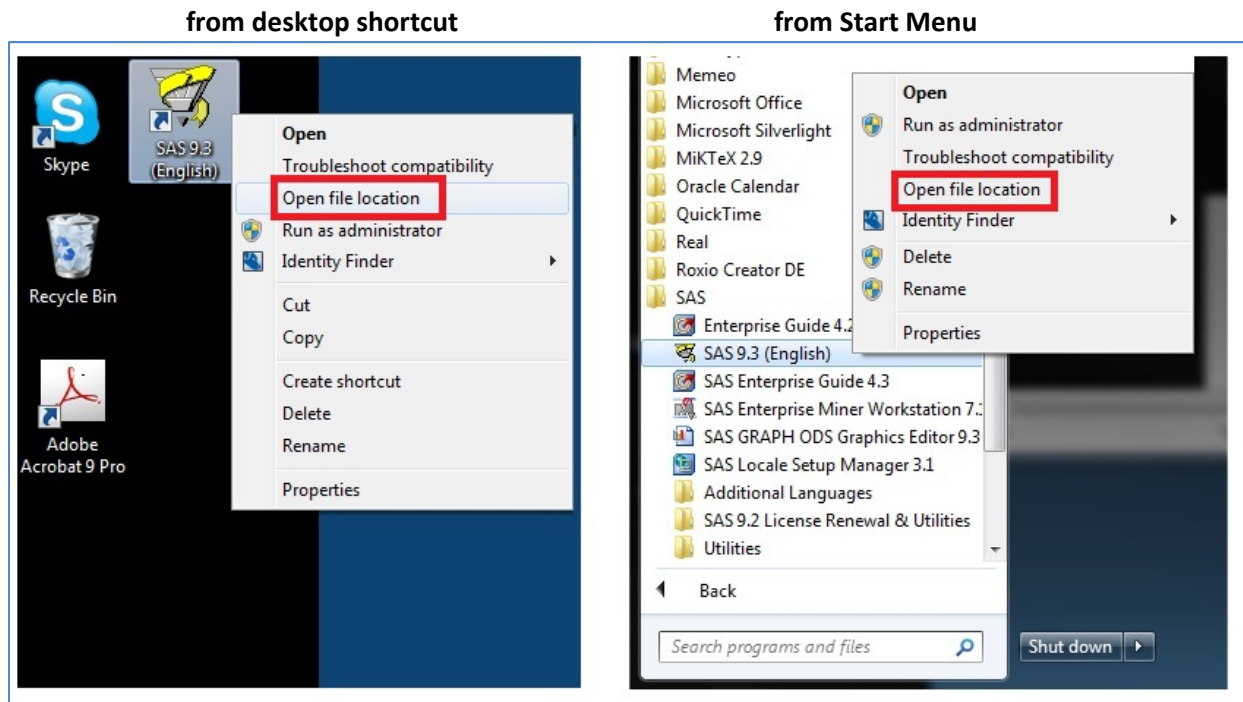
Note: 32-bit or 64-bit refers to your SAS installation, not your computer

3. Open the (downloaded) folder containing PROC Qlearn



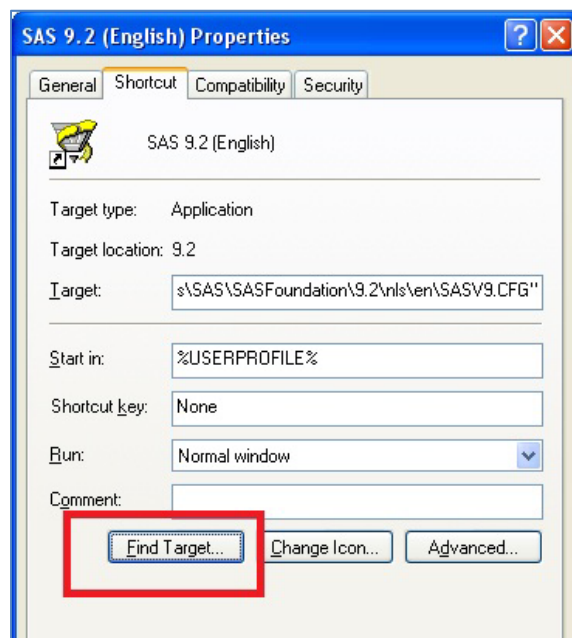
4. Open the folder containing the SAS executable file

- a. Right-click on the SAS 9 icon on the desktop or in the Start menu
- b. In the menu that opens, select "Open File Location." The proper folder will open.

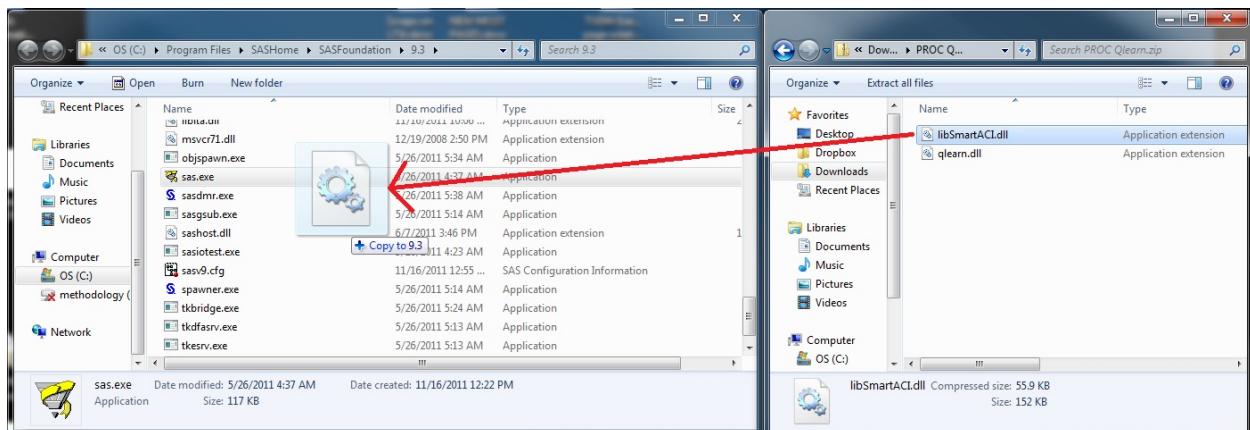


If the menu does not include the "Open file location" option: (OS other than Windows 7)

- a. Click on "Properties." A popup screen will open.
- b. Click the "Find Target" button. The proper folder will open.



5. Move the file *libSmartACI.dll* in the install folder opened in step 3 to the folder opened in step 4

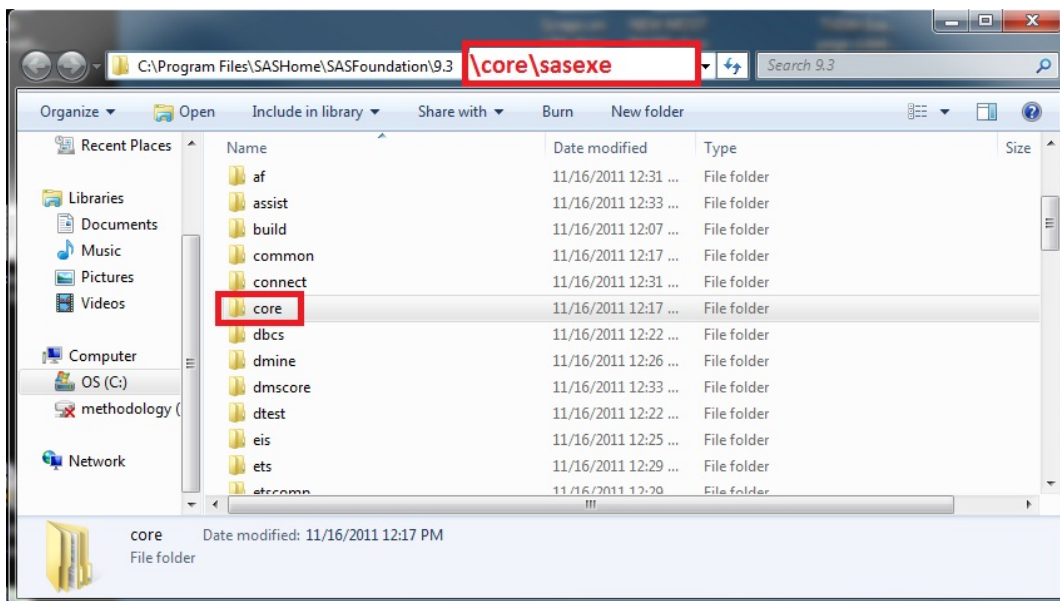


6. In the same folder (where you just placed *libSmartACI.dll*), navigate to the “\core\sasexe” subdirectory

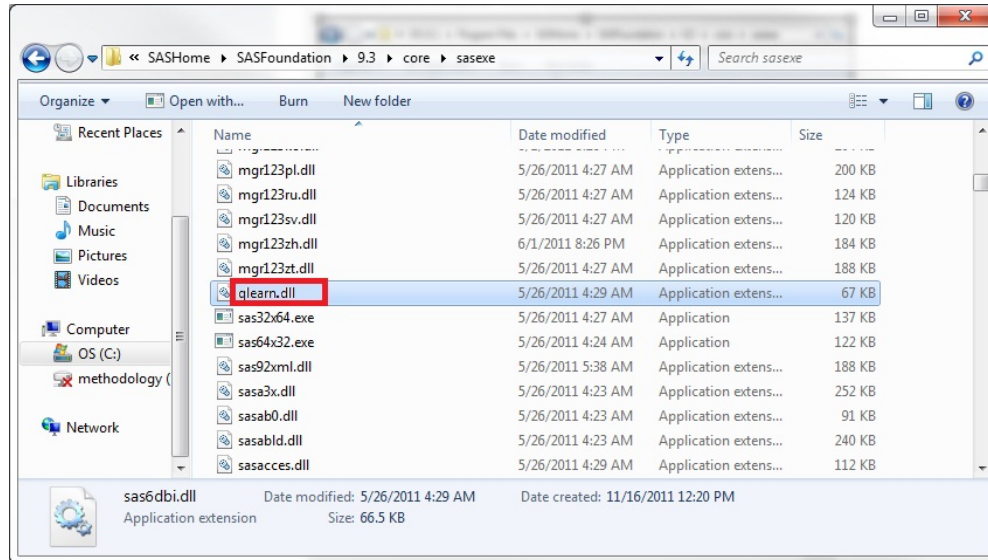
a. You can do this in either of the following ways:

- i. Type “\core\sasexe\” at the end of the directory path
- ii. Double-click on the “core” folder in the open window. Then, double click on the “sasexe” folder within the “core” folder.

b. The proper folder will open.



7. Place the file *qlearn.dll* in the open folder



a. Installation is complete. Close folders and launch SAS.